



MID RIVERS
SADDLE CLUB



Gearing Up for 2012



Plans are underway for another great MRSC show season! Two shows have been added to the schedule this year, making a total number of nine shows in 2012. This year MRSC will have three weekends of 2 day events with the entire show bill running each day.

This year our shows will return to the National Equestrian Center, 6880 Lake St. Louis Blvd., Lake St. Louis, MO 63367. Shows will begin at 9:45am with class #1 starting PROMPTLY at 10:00am. Each show will feature one specialty class which will vary from show to show. Last year's specialty classes included jackpot pleasure classes, Daddy Day lead line, Blue Bunny Egg & Cone and the Costume class held at the October show. Information regarding the specialty class scheduled for each show will be available on the MRSC website at www.MidRiversSaddleClub.com.

Mark Your Calendars

Mark your calendar now with this year's show dates. The first two shows in April will be in *Arena A* at the NEC.

Saturday April 21 -

Sunday April 22 -

Saturday May 5 - Think Pink

Saturday June 9

Sunday June 10

Sunday July 8

Saturday August 4 - Blue Bunny Show

Saturday October 20 - Fall Classic

Sunday October 21- Halloween Show



We are still looking for SHOW SPONSORS so go to the website and print a sponsor form!

Membership & Sponsorship

Membership has its benefits! Members earn points toward awesome year-end awards. Members can also show all day for \$40.00. In each of our classes we award a class champion, reserve champion and present awards to sixth place. Last year we awarded over \$5,000 in prize money and awards.

We also present division High Point Grand Champion and Reserve High Point Champion in each of our four divisions—Novice; Youth Walk-Trot: 13 & Under; Youth: 18 & Under; Adult: 19 & Over.

Save time at the first show and send your Membership & Sponsorship forms in early! See the website for the application.

What's New at MRSC

- ◆ The next MRSC general membership meeting will be held on Tuesday, February 21 at Bandana's in Wentzville. The room opens at 6:00pm with the meeting starting at 6:30pm.
- ◆ A laptop and/or printer with fax/copier combination is needed for the registration desk. It needs to be a business model that uses a toner drum, not ink cartridges.
- ◆ Prizes are needed for the Lead Line and Walk classes. Possible donations include candy, treat bags, horse treats and small stuffed animals.
- Please bring a copy of your Coggins & Health Certificates to the stall desk when you check-in. They will be placed in a binder for future reference. Exhibitors may also send copies in with their Pre-Registration.



2012 Officers and Board Members

The election for officers and board members was held at the December meeting.

- ◆ President - Brad House...[Show@MidRiversSaddleClub.com](mailto>Show@MidRiversSaddleClub.com)
- ◆ Vice President - Chris Mochel...Chris@MidRiversSaddleClub.com
- ◆ Show Secretary - Mary Ann Griffith...Maryann@MidRiversSaddleClub.com
- ◆ Recording Secretary - Liz Keimon...Liz@MidRiversSaddleClub.com
- ◆ Awards Secretary - Jennifer Donnell...Jennifer@MidRiversSaddleClub.com
- ◆ Treasurer - Teresa Edwards...Teresa@MidRiversSaddleClub.com
- ◆ Sergeant of Arms - Tim Griffith...Tim@MidRiversSaddleClub.com
- ◆ PR Secretary - Kristin Joehl...Kristin@MidRiversSaddleClub.com
- ◆ Board Members: Heather Romriell, Spring Hale, Karla Dietz, Brenda Wasser and Pam Beilman

Want to Show for Free in 2012?



Interested in helping out at the shows? Attending with a friend or family member and have time on your hands? Want to become more involved with MRSC? We have a limited number of opportunities for individuals to work the stall and registration desks on the evening before the shows as well as on show days. Shifts range from 2-8 hours and a stipend will be paid for these positions. This is a great opportunity to support the club while covering your (or your child's) entry fees. If you want more information about this opportunity or are interested in applying please contact Liz Keimon at Liz@MidRiversSaddleClub.com or call her at 314-732-7583.

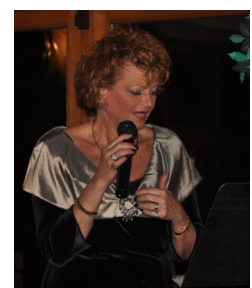
Where do you take a sick horse? To the Horspital!

How did the trainer try to make riding enjoyable? He tried to stirrup some interest!

Why is an egg like a young horse? Because it can't be used until it's broken!



Congratulations to all those that earned year end titles with MRSC and awards with other horse organizations!!



Please e-mail information regarding your accomplishments to Kristin@MidRiversSaddleClub.com for inclusion in a future newsletter as space permits.

www.midrivessaddleclub.com
